

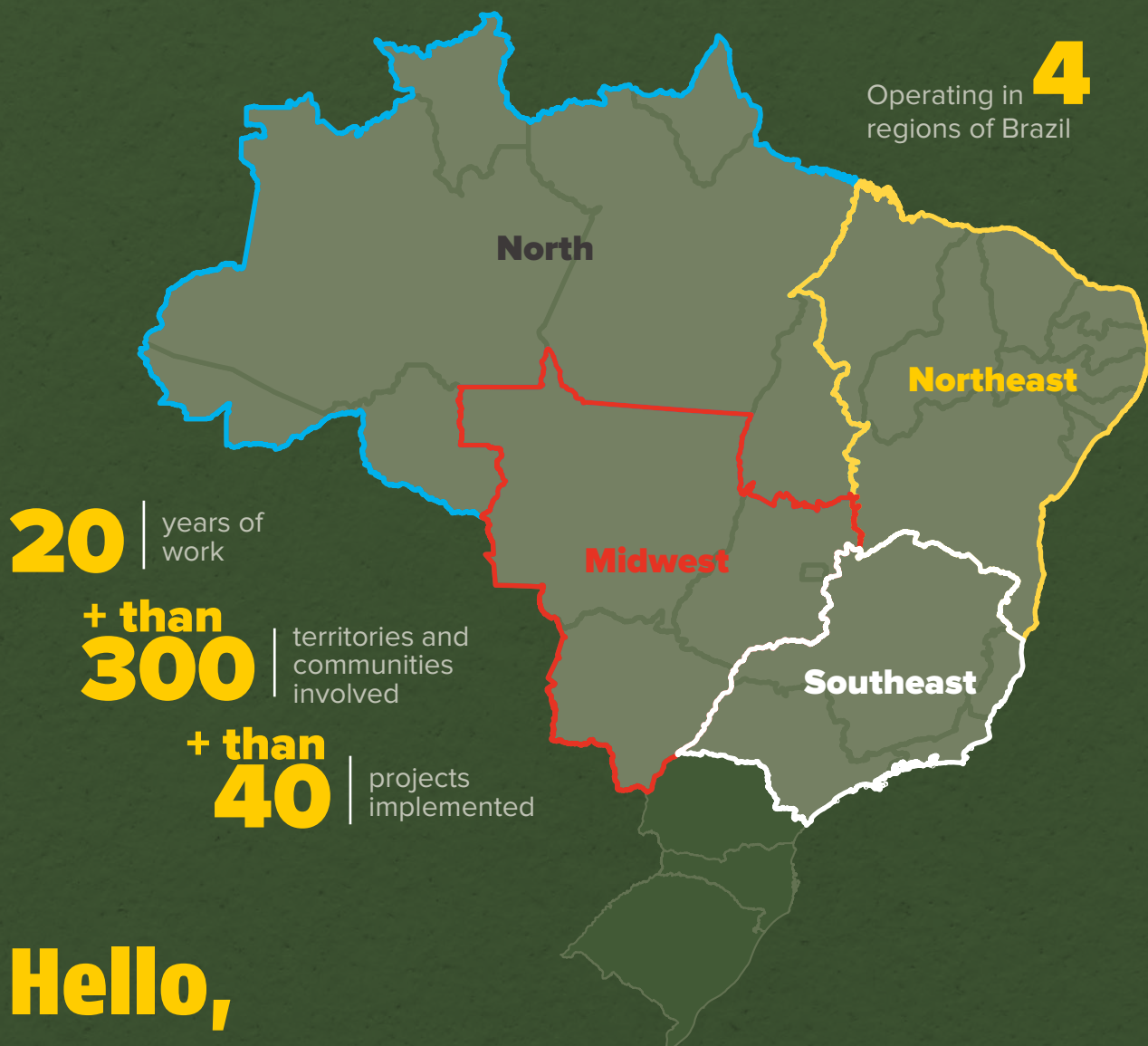
Learn more about
some of the key
projects developed
over the last



portfolio







We are Ecam, an organization that has been working for 20 years to combine socioeconomic development and environmental balance, promoting actions motivated by the interests of society and aligned with environmental conservation.

By respecting the local culture and listening to everyone, we develop projects together with local leaders and the public and private sectors for the sustainability and autonomy of the populations. We work to promote a fairer, more prosperous, and more sustainable society.

Currently, Ecam has projects in different sectors of the economy, nationally and internationally, which are part of its two main initiatives: **Ecam Social Projects and Ecam Social Business.**






Ecarn Social Projects

Ecarn Social Projects involves the joint planning and implementation of programs and activities along with traditional peoples and communities and local players to support territorial and environmental management processes.

The actions of Ecarn Social Projects resulted in the creation and implementation of different projects that promote visibility and acknowledge the important role played by communities in conserving the environment and the country's biodiversity.



New Technologies and Traditional Peoples Program

The New Technologies and Traditional Peoples Program supports indigenous peoples, *quilombolas*, and small producers in the implementation of practices associated with the sustainable use of their territories. The program offers workshops on the use of technological tools, such as Google Earth, ODK, and YouTube, and fieldwork support for data collection. These tools were selected because of their importance for territory management and because they can give visibility to the history and claims of the communities.

To broaden access to teaching materials for training and also for the project as a whole, a website was created with a wide range of support materials about the program's tools:
<https://sites.google.com/earthoutreach.org/amazon/home>.

The New Technologies and Traditional Peoples Program is the result of a collaboration between Google Earth Solidarity, Ecarn Social Projects, and several communities that have been involved since 2007. This initiative also includes partners such as: Associação Metareilá do Povo Indígena Suruí (Gamebey), Associação de Defesa Etnoambiental Kanindé, Associação de Remanescentes Quilombolas - ARQMO, Coordenação Nacional de Articulação das Comunidades Negras Rurais Quilombolas - CONAQ, Natura, and the United States Agency for International Development (USAID).



We operate in **9** Brazilian states and have over

140

Quilombola communities and

70 indigenous communities involved



(data from 2017 to 2021 from the New Technologies and Sharing Worlds programs)

Sharing Worlds Program

The Sharing Worlds Program has emerged from the need communities have to go beyond learning and using the tools. In this phase, communities are trained on quantitative and qualitative analysis of the data collected and formulate information applicability strategies. Such strategies are mainly focused on ensuring the rights of the communities are



guaranteed and providing access to public policies. Currently, the program is running in more than 200 traditional communities living in the Amazon.

This second stage is the result of a partnership between Ecarn Social Projects, Google Earth Solidarity, the United States Agency for International Development - USAID and a partnership between associations such as *Associação de Remanescentes Quilombolas - ARQMO* and *Coordenação Nacional de Articulação das Comunidades Negras Rurais Quilombolas - CONAQ*.

Digital Inclusion Initiative

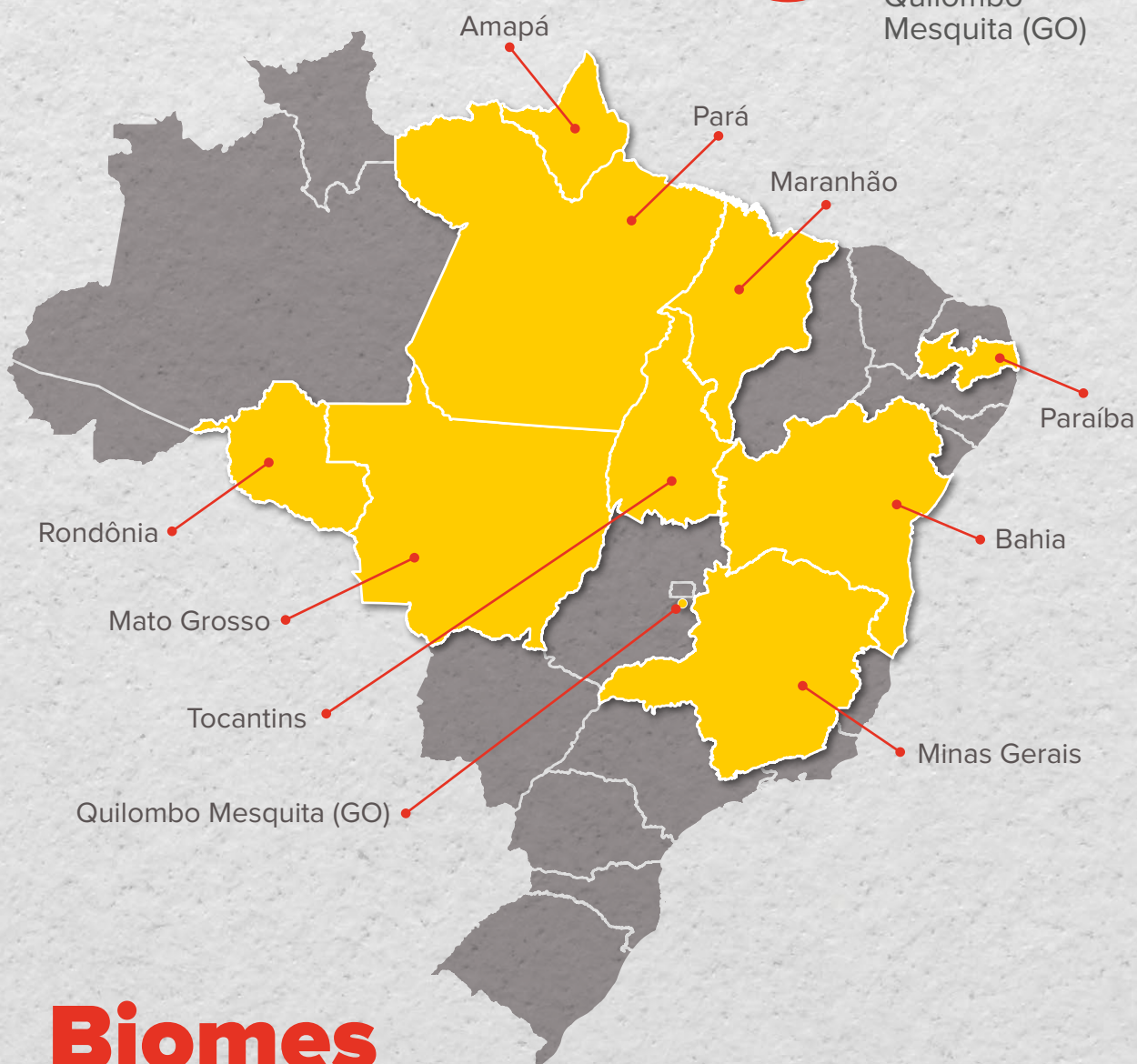
The initiative was born out of a partnership between Ecarn Social Projects and the public and private sectors. It is intended to promote the digital inclusion of rural communities through the installation of internet connection points. In addition, it offers lectures to raise awareness of the importance of virtual environments and the precautions users should take. It also offers content production workshops to give visibility to the history, reality, and claims of the communities in the digital environment.



🌿 *Quilombola* Family Farming Initiative

Scope of the
Quilombola Family
Farming Initiative

9 Brazilian
states involved
+ Quilombo
Mesquita (GO)



Biomes

Caatinga • Cerrado • Amazon

“...family farming represents the main source of income for quilombola communities and its most distinctive characteristic includes the use of techniques with low environmental impact.”

The *Quilombola* Family Farming initiative operates in the Cerrado, Caatinga, and Amazon biomes to help promote the recognition of quilombola populations as farmers, environmental protectors, and mitigators of climate change.

Currently, family farming represents the main source of income for *quilombola* communities and its most distinctive characteristic includes the use of techniques with low environmental impact. Therefore, since it was implemented in 2020, the initiative has carried out actions to strengthen and expand family farming by making diagnoses, surveying public policies aimed at *quilombola* communities, mapping out the existing scenario, and preparing guidelines on initiatives to encourage family farming, workshops for the production of biofertilizers, among other actions.

The initiative is the result of a partnership between Ecarn Social Projects, local and state associations, CONAQ, Porticus, and Instituto Clima e Sociedade (ICS).

Action for Carbon Neutralization

Ecarn sees technology as a strong ally to support the work of communities and give visibility to the sustainable character of their ways of life. For this reason, it has teamed up with Google, CAL-PSE, SERVIR-Amazônia, and other partners to develop new tools that broaden the access to offline mapping and data collection and that confirm the potential of ancestral practices of family farming in mitigating climate change.

Through an app called Ground, communities in the Amazon are quantifying their ability to preserve carbon stocks and reduce emissions in food production, which is key to putting these populations in a better position to promote climate change mitigation policies and meet other urgent needs.

🌿 Sustainable Livestock Program

In 2017, the program invited 14 rural producers from Oriximiná (state of Pará) whose main source of income was cattle raising for a joint action. The objective was to find alternatives to cushion deforestation fronts in the Amazon and value the activities of local populations.

It was such a successful experience that deforestation was fully interrupted on the farms. Therefore, vegetation regeneration and significant gains in productivity were observed. This made it possible to extend the actions to the municipalities close to Monte Alegre, Prainha, and Juruti and expand the actions of the project to more than 40 farms in Pará. Currently, the rural properties are supported by a specialized local technical team that works on four fronts:



45

farms
served in
Pará

4

municipalities
benefited

- ▶ Cattle management: by creating paddocks on the farm, animals can be better fed in a shorter period of time.
- ▶ Soil management: to contribute to even more efficient nutrition, the soil is monitored and corrected periodically, according to technical guidelines.
- ▶ Water management: the water available on the farm is frequently monitored to ensure it is clean and of quality for animal use. This involves installing drinking fountains close to the cattle - inside the paddocks - which are supplied from a stream through pipelines or artesian wells.
- ▶ Tree management: guidelines are provided for planting trees that are adequate to the biome in which the farm is located, thereby influencing bovine weight gain and milk production, and ensuring shade and thermal comfort for the animals.

Ecarn Social Business

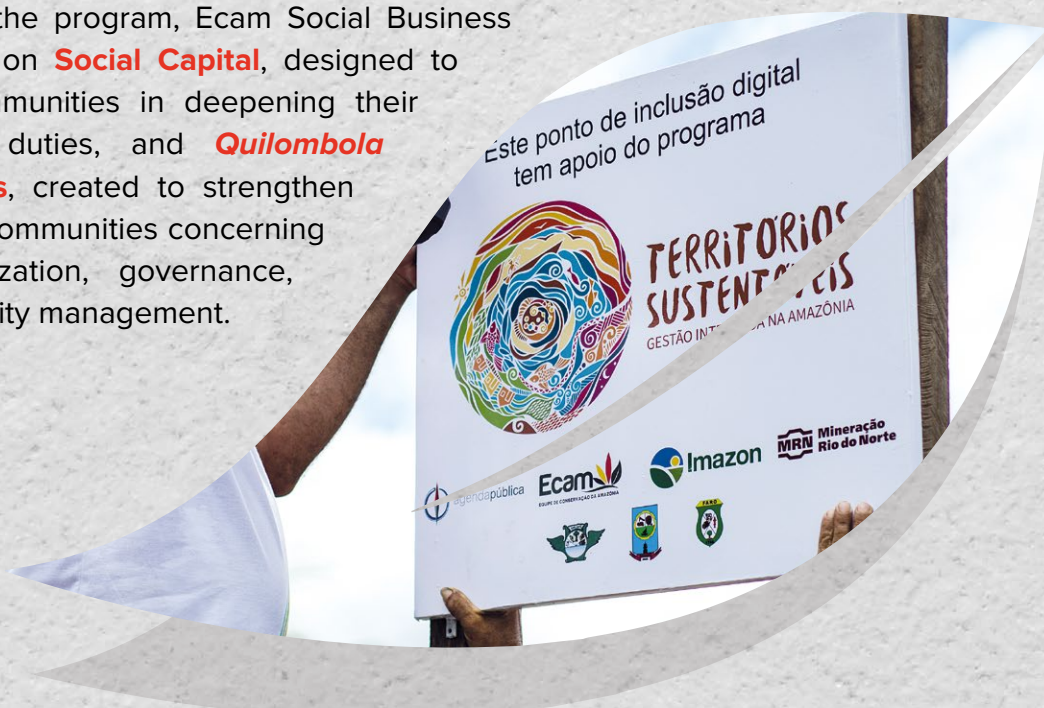
Ecarn Social Business is a work front of Ecarn that operates in **strategic initiatives with the private sector**, in the relationship with stakeholders, in the implementation of financial mechanism models, and in the development of solutions that improve the results of social investments.

The partnership between Ecarn Social Business and the private sector produced results in different initiatives.

Sustainable Territory Program

The Sustainable Territory Program was created to encourage sustainable development in the Amazon region of western Pará through a collaboration between the public and private sectors, and local populations. Based on active listening to identify the most urgent needs, partners and communities created an integrated action plan focused on five fronts: Public Management, Economic Development and the Environment, Social Capital, and Quilombola Communities.

Within the program, Ecarn Social Business has worked on **Social Capital**, designed to support communities in deepening their rights and duties, and **Quilombola Communities**, created to strengthen quilombola communities concerning their organization, governance, and community management.



+
+
+
than **6**
thousand people
benefited
directly and
indirectly

+
+
+
than **230**
workshops offered

8 associations
supported

7 *quilombola* territories
benefited

(results of Ecam Social Business on Social Capital and *Quilombola* Communities)



It is worth mentioning that this work model was designed to be implemented in territories inside and outside the Amazon. In western Pará, for example, it was carried out jointly by the social organizations Imazon, Ecam, and Agenda Pública, and it was supported by Mineração Rio do Norte (MRN) and the United States Agency for International Development (USAID).

benefits

people

workshops

🌿 Partnership Platform for the Amazon (PPA)

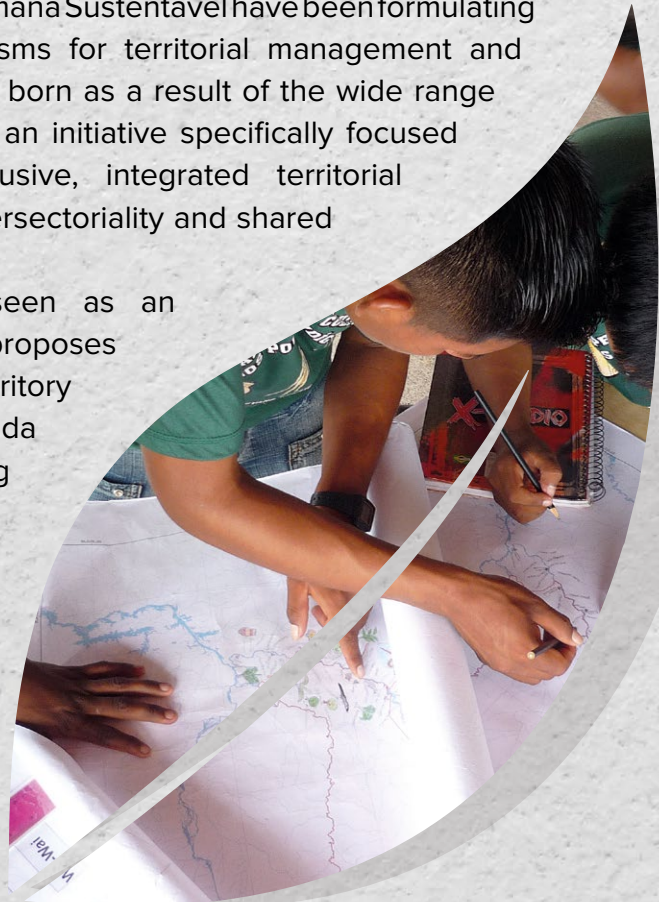
The PPA is a collective action platform led by the private sector to create innovative solutions for sustainable development and conservation of Brazilian Amazon's biodiversity, forests, and natural resources.

Within the initiative, Ecam Social Business and Instituto Peabiru worked for two years in the executive coordination of the state of Pará, being responsible for the initial articulation with different segments of the private sector, including agribusiness, mining, logistics, communication, and retail.

🌿 Lumi

Ecam Social Business and Humana Sustentável have been formulating strategies, models, and mechanisms for territorial management and governance since 2016. Lumi was born as a result of the wide range of associated experiences and is an initiative specifically focused on creating strategies for inclusive, integrated territorial development that emphasizes intersectorality and shared governance.

This business model is seen as an innovative solution because it proposes that all the players in the same territory get together around a shared agenda and vision of the future, building and strengthening the necessary capacities and implementing actions for short, medium, and long-term integrated development, which generates autonomy and sustainability.



Lumi works on 6 fronts, focused on strengthening local players and developing the territory:

- ▶ Agreements, diagnoses, and mapping of local and external players.
- ▶ Institutional strengthening of associations and leadership training.
- ▶ Territorial Management (including Management Plans and Financial Mechanisms).
- ▶ Support to Public Policies for development.
- ▶ Digital inclusion and community communication.
- ▶ Support to Economic Development and structuring social and biodiversity production chains.

Building Financial Mechanisms

Quilombola Fund

A management tool created with and for *quilombola* communities, designed to offer transparent financial support in situations involving the transfer and allocation of social investments.



Hydro Sustainability Fund

This fund was created for the sustainable development of Barcarena and other Brazilian regions. It is intended for project financing based on the guidelines and priorities defined within the scope of the Sustainable Barcarena Initiative (IBS).



Cooperation During the Pandemic

The pandemic brought a new virus and with it social distancing, challenges for the public healthcare system, and increased food insecurity in communities in various parts of Brazil. Faced with this scenario, Ecam decided to take action and take part in collaboration networks to mitigate the impacts of COVID-19 on communities that were in a situation of social vulnerability, especially traditional ones.

Donation of food, hygiene kits, prevention materials, and hospital equipment were some of the emergency actions carried out by Ecam. Additionally, the organization was concerned about developing initiatives and diagnoses to support communities in the medium and long term.

One of the first diagnoses carried out was a **VULNERABILITY MAPPING IN TRADITIONAL AMAZON COMMUNITIES DURING THE COVID-19 PANDEMIC**, which included 60 traditional communities in the Brazilian Amazon and found that 70% of them were at high, very high, and extremely high risk of being infected with the new coronavirus. A scenario that is largely due to the fact that most of these populations have poor access to healthcare and infrastructure, and cannot distribute their production during the period of isolation.

Therefore, an initiative that was first implemented in the Amazon was soon expanded to other parts of Brazil, with support being offered to populations in the North, Northeast, Midwest, and Southeast regions, who also needed help.



🔥 Supporting the Vaccination Plan of Quilombola Communities

During the pandemic, Ecam was also concerned about keeping in touch with the leaders of *quilombola* communities to jointly develop action plans and take supplies to the most affected places.

This resulted in support being offered to the Coordination of Rural Black *Quilombola* Communities of Amapá (CONAQ - AP) to carry out a population estimate survey for the vaccination of 64,000 *quilombolas* in Amapá, corresponding to 10% of the state population. (Source: CONAQ-AP).

🔥 Supportive Quilombo: Income and Production

+
+
than **2** food parcels
thousand donated

+
+
than **60** communities
assisted

2 diagnoses on
productivity actions
in the communities

This project is yet another action that was born from the partnership between Ecam Social Projects and Instituto Clima e Sociedade (iCS) as a response to the COVID-19 pandemic and the need to strengthen the production activities of *quilombola* populations. During the pandemic, the project supported communities in Northern Brazil by delivering food parcels and hygiene kits to reduce food insecurity in the territories during social distancing.

Solidarity PPA

330 thousand
pieces of medical protective
equipment donated

8 pieces of
healthcare
equipment
donated

6 new rehabilitation
centers

Ecam Social Business sought to work on initiatives with the private sector during the pandemic, including as an implementer of actions to face the COVID-19 pandemic in the Amazon region. The initiative donated food parcels, hospital materials and equipment, educational materials about the pandemic, and offered financial support to cooperatives of family farmers - in addition to carrying out a situational diagnosis to identify the social and economic impacts felt by the organizations and their members.

\$ BRL
400 thousand
directly allocated

+
than **20** people
thousand assisted

+
than **3.8** food
thousand parcels
donated

Ecam Publications

Throughout its history, Ecam has launched more than 80 studies in the areas of territorial management, sustainability, transfers of social investments, among other topics that are part of its scope of action. Most of the studies were developed by Ecam Social Business and Ecam Social Projects in collaboration with the populations involved and in partnership with national and international institutions from different sectors of the economy. The publications also serve as an online consultation material for communities, producers, and other groups that were involved in the initiatives.



**Diagnosis: productivity actions
in the Quilombola Communities
of Amapá**



**Diagnosis: productivity actions
in the Quilombola Communities
of Rondônia**



**Diagnosis of public policies
aimed at *quilombola* family
farming**



Study of the production chain and the technical and economic feasibility for the implementation of a beef and swine slaughterhouse in the municipality of Oriximiná, state of Pará



Investing in development: Models and instruments for the allocation of private funds to communities and territories



Manual for building and implementing community income transfer programs



Building a risk mitigation plan for cases of private fund transfer to communities and territories



Quilombola Fund Manual

PT | EN

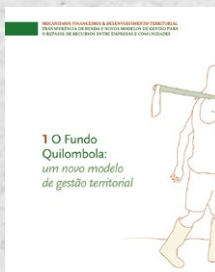


Maps show vulnerability in traditional communities in the Amazon in the face of the COVID-19 pandemic

PT | EN



Financial Mechanisms and Territorial Development Income Transfer and new Management Models for the transfer of funds between Companies and Communities



1 The Quilombola Fund: a new territorial management model



2 Income transfer programs: from design to implementation



3 Socio-environmental impacts of increased income: a trend study



4 Guidelines for building and implementing Income Transfer Programs by the community



Views and dialogues for territorial management: training community rangers for conservation in protected areas



Sustainable Territory Program: building an integrated territorial management program in the Amazon

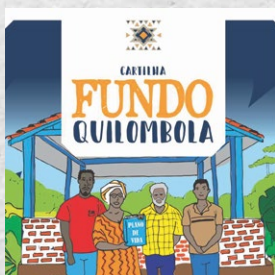


Quilombos and Quilombolas in the Amazon: the challenges concerning knowledge (acknowledgment)

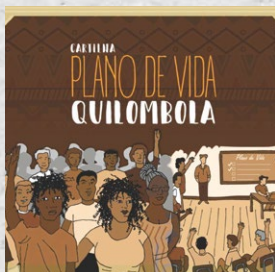
PT | EN | ES



Strategic vision of social biodiversity in Mid-South Rondônia



Quilombola Fund Guidelines



Quilombola Life Plan Guidelines



Quilombola Territories in Pará: Management Plans and Financial Instruments: A governance model for development

Our work cannot end here. Let's talk?

These are some of the actions carried out over the last 20 years, which reflect the essence of Ecam to contribute to a fairer, more prosperous, and more sustainable present and future. Our work involves many hands, designed and implemented alongside people and institutions that, like Ecam, seek to generate a positive social impact on society.

Would you like to learn more about our work and the projects we have developed? Contact us through our communication channels and let's talk.

E-mail

contato@ecam.org.br

Website

ecam.org.br

Telephone

(61) 3323-7863

Follow Ecam on social media and learn more about our work

- 🐦 Twitter: @equipeecam
- 🌐 LinkedIn: @equipeecam
- 📘 Facebook: @equipeecam
- 📷 Instagram: @equipeecam
- 📺 YouTube: @ecamequipe



BRASÍLIA - DF

SAS Quadra 03, Bloco C
Ed. Business Point, Sala 303
CEP 70070-934
Phone: +55 (61) 3323-7863

